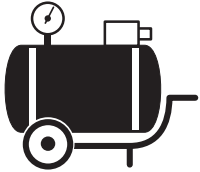


AIR SUPPLY



AIR HOSE SIZE:

Air Inlet		Air Hose	
1/8" NPT air inlet	use	1/4" ID air hose	
1/4" NPT air inlet	use	3/8" ID air hose	
3/8" NPT air inlet	use	1/2" ID air hose	

AIR PRESSURE: 90 PSI Air Pressure is recommended for the most efficient performance. Too high of air pressure will shorten the life of the tool.

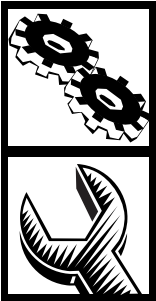
LUBRICATION



FOR AIR MOTOR: Apply turbine oil before and after operation. (For example, MOBIL TURBINE OIL #32, SHELL TURBINE OIL #32, or equivalent.)

FOR BEARINGS: Apply recommended high quality grease properly (for example, SHELL ALVANIA NO.2, SHELL ALVANIAEP, MOBILPLEX 2, MOBILPLEX 47 or equivalent) once every three months or when the tool is overhauled. Over-greasing will cause dull motion or overheating.

MAINTENANCE



DRY AND CLEAN AIR: Drain daily and install filter at or near the take-off point to prevent trouble from foreign matter.

AIR HOSE AND JOINTS: Use air hose (the shorter, the better), joints and other fittings of good condition and of proper size to avoid pressure drop.

REGULAR OVERHAUL: At least once every three months regular or periodical overhaul by a competent person is needed for best performance and trouble free operation.

GENUINE PARTS: Use only EAGLE genuine spare parts for replacement.

Any repair of EAGLE tools must be completed by Eagle Industries or an authorized EAGLE Service Center. Contact EAGLE at 1-503-254-1749 for an authorized Service Center in your area.



REVISED 7/98



Operating Instructions for

Die Grinders

REFERENCE ONLY

**EAGLE
INDUSTRIES**

10000 SE PINE, PORTLAND, OR 97216
503-254-1749 FAX 800-959-6601

Die Grinders

It is the responsibility of the employer to place the information on this instruction sheet into the hands of the operator.



Eagle Industries tools have been designed with safety in mind. But it is still the responsibility of the user or service technician to insure that there is no misuse.

On the opposite page is a brief description of safe use practices when using grinders.

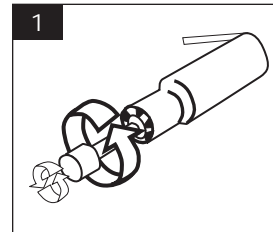
Always operate, inspect and maintain this tool in accordance with American National Standards Institute Safety Code for Portable Air Tools (ANSI 13186.1) and any other applicable safety codes and regulations.

IMPORTANT

Make sure that these instructions are fully understood before operating this tool. The tool and its attachments and accessories must only be used for their designed purpose. For product liability and safety reasons, any modifications of the tool and its accessories must be agreed upon by the technical authority of the manufacturer. All locally legislated safety rules with regard to installation, operation and maintenance shall be respected at all times.

INSTRUCTIONS FOR SAFE OPERATION

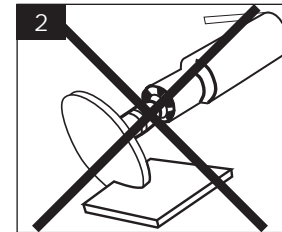
FIRST, follow your local safety regulations strictly on grinders and abrasives.



Ensure that the RPM of the grinder does not exceed the rated max. RPM of the insert tool.

Remove the insert tool before checking the RPM of the grinder.

Make sure that the rated speed marking on the tool is readable.



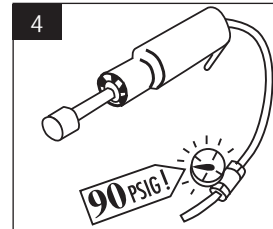
Cutting off wheels and routing cutter wheels shall not be used.

Do not mis-match collet sizes and shank sizes.



After mounting the insert tool, operate the grinder in a protected area to check that no failure occurs.

Keep the space around the grinder free from other people.



Ensure that pressure does not exceed 90 PSI. Use a pressure regulator.



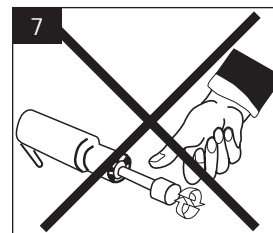
Use personal protection equipment.

Avoid inhaling dust resulting from the grinding operation by using an approved dust mask or dust exhaust system.

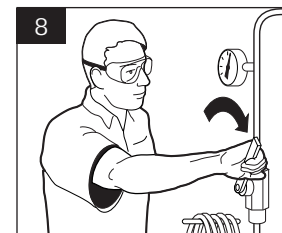
When using wire brushes, wear goggles and clothing that offer protection from the thrown wires.



Keep loose clothing and long hair clear of the grinder.



Beware of run-on. Do not touch the tool, after turning it off, until it has stopped completely.



Turn off air supply before changing insert tool or disconnecting hose. Beware of whipping air hose.



Do not use machine in an explosive or potentially explosive atmosphere.