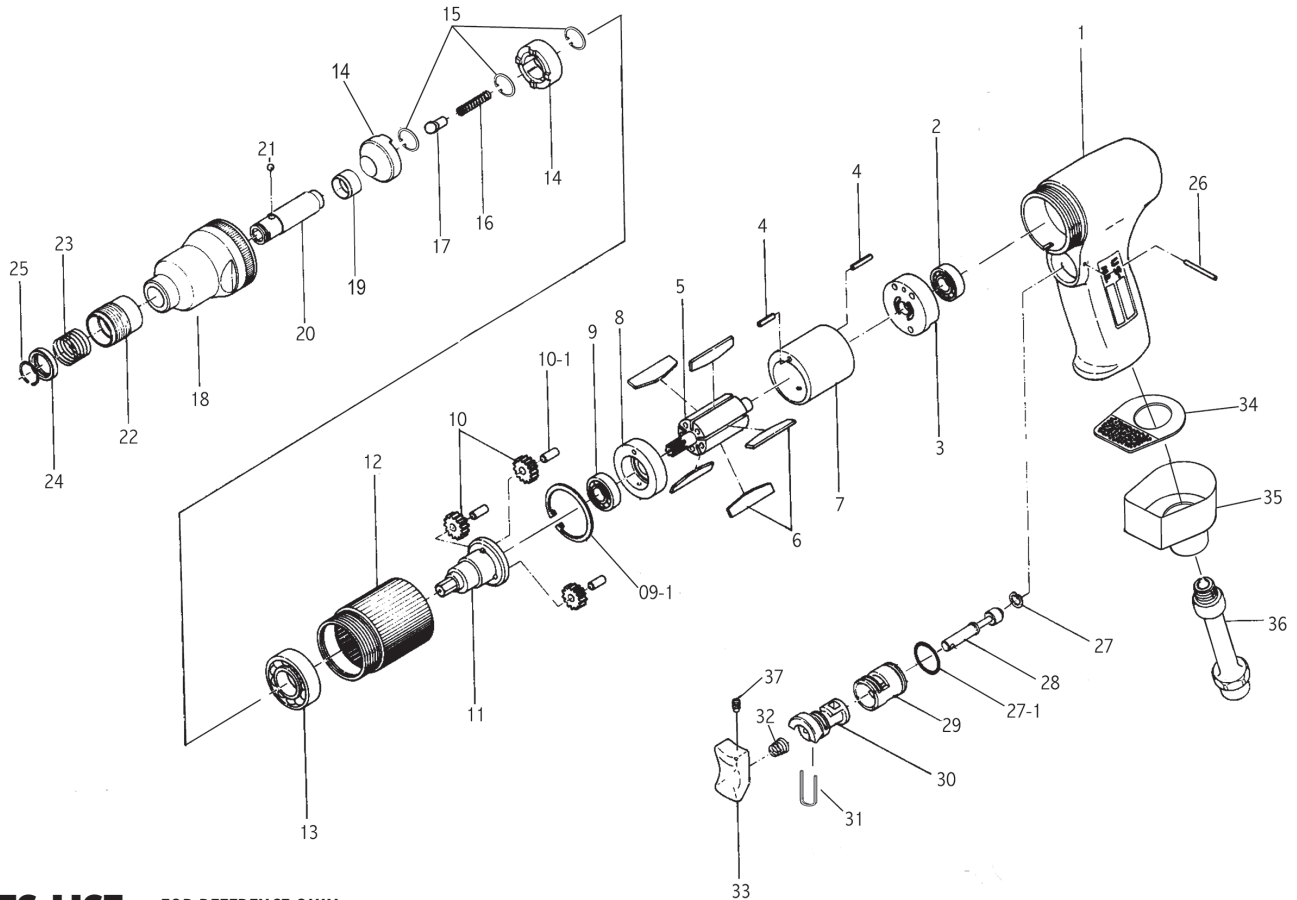


# 1121 POSITIVE CLUTCH SCREWDRIVER

## EXPLODED VIEW



## PARTS LIST — FOR REFERENCE ONLY

Index Number	Part Number	Description	Qty.	Index Number	Part Number	Description	Qty.	Index Number	Part Number	Description	Qty.
1	202101	Motor Housing	1	14	70459400	Drive Dog	2 ●	28	202128	Valve Stem	1
2	202102	Ball Bearing	1	15	202115	Retaining Ring	3 ●	29	202129	Valve Bushing	1
3	202103	Rear End Plate	1	16	202116	Spring	1	30	202130	Reverse Valve	1
4	202104	Pin	2	17	202117	Spindle' Guide	1	31	202131	Retainer	1
5	202105	Rotor	1	18	202118	Clutch Housing	1	32	202132	Valve Spring	1
6	202106	Rotor Blades	5 ●	19	202119	Bushing	1	33	202133	Trigger	1
7	202107	Cylinder	1	20	202120	Spindle	1	34	202134	Muffler	1 ●
8	202108	Front End Plate	1	21	202121	Steel Ball	1	35	202135	Exhaust Diffuser	1
9	202109	Ball Bearing	1	22	202122	Release Sleeve	1	36	202136	Air Inlet	1
09-1	202109-1	Snap Ring	1	23	202123	Spring	1	37	202137	Set Screw	1
10	202110	Planet Gear	3	24	202124	Washer	1				
10-1	202110-1	Bushing	3	25	202125	Retaining Ring	1				
11	202111	Gear Plate	1	26	202126	Pin	1				
12	202112	Gear Housing	1	27	202127	O-Ring	1 ●				
13	202113	Ball Bearing	1	27-1	202127-1	O-Ring	1				

## TECHNICAL DATA

	Max Air Pressure	Recommended Air Hose Size	RPM Free Speed	Max Air Flow CFM	Weight (lbs.)
1121	90 psi	3/8"	1,800	16	2.5

**EAGLE GROUP**  
A Division of AIMCO

10000 SE PINE  
PORTLAND, OR 97216  
503-254-6600  
FAX 503-255-2615

When ordering spare parts, please specify tool type, part number, and description

## FOOTNOTES

● = Items in Repair Kit 1121-RK