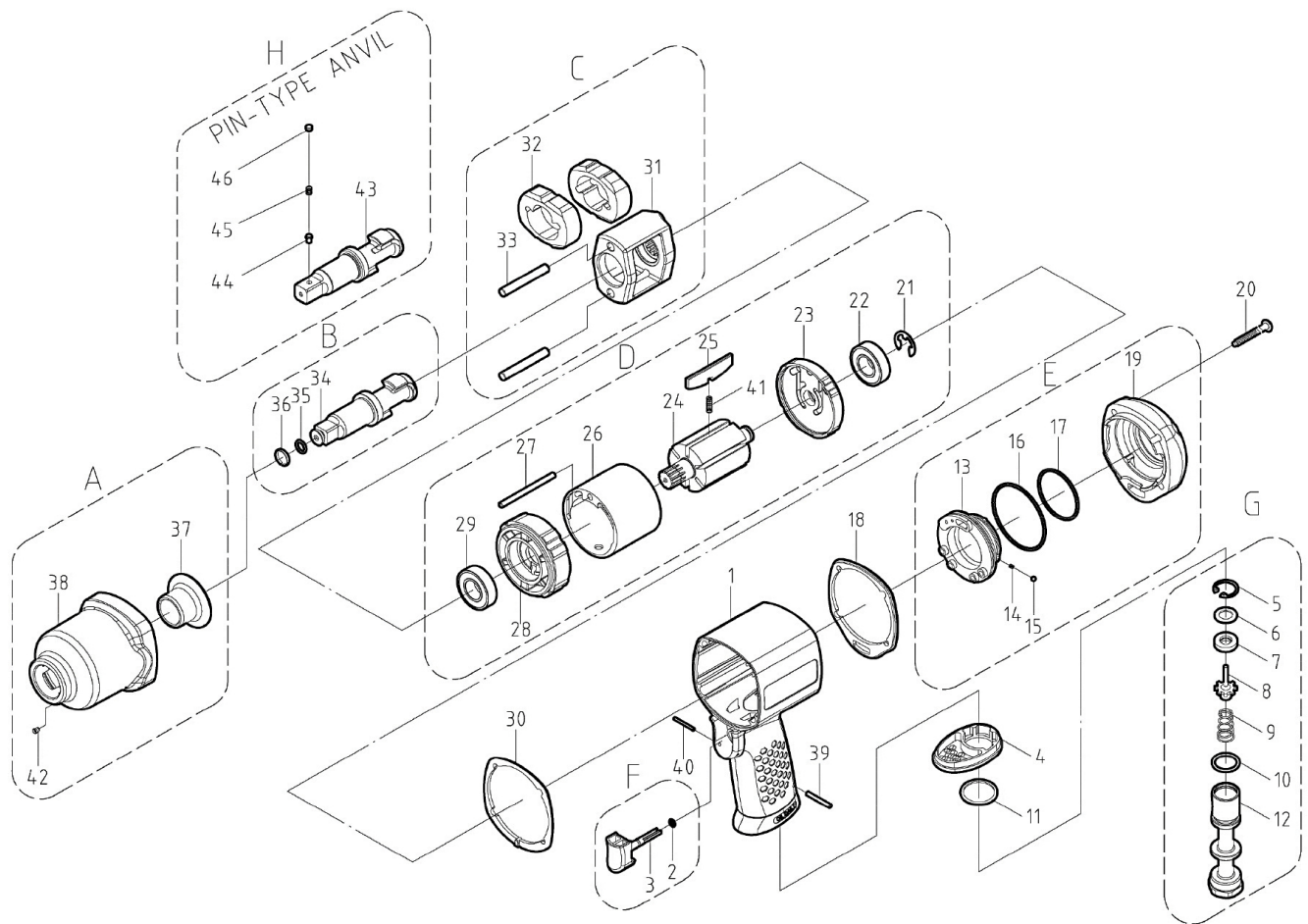


# 2240 & 2240PEC 1/2" IMPACT WRENCH

## EXPLODED VIEW



### PARTS LIST — FOR REFERENCE ONLY

Index Number	Part Number	Description	Qty.	Index Number	Part Number	Description	Qty.	Index Number	Part Number	Description	Qty.	
1	2240-1	Housing	1	27	2240-27	Spring Pin	1		2240-RK	Repair Kit	1	
3	2240-3	Trigger	1	28	2240-28	Front Plate	1			(parts available in kit only)		
4	2240-4	Exhaust Deflector	1	31	2240-31	Hammer Cage	1	2		O-Ring	1	
5	2240-5	Retaining Ring	1	32	2240-32	Hammer	2	7		Oil Seal	1	
6	2240-6	Washer	1	33	2240-33	Hammer Pin	2	10		O-Ring	1	
8	2240-8	Pin Valve Rod	1	34	2240-34	Anvil	1	16		O-Ring	1	
9	2240-9	Cone Spring	1	37	2240-37	Bushing	1	17		O-Ring	1	
11	2240-11	Washer	1	38	2240-38	Front Casing	1	18		Packing	1	
12	2240-12	Air Inlet	1	39	2240-39	Spring Pin	1	22		Ball Bearing 6001ZZ	1	
13	2240-13	Reverse Lever	1	40	2240-40	Spring Pin	1	25		Blade	7	
14	2240-14	Spring	1	41	2240-41	Spring	7	29		Ball Bearing 6002ZZ	1	
15	2240-15	Steel Ball	1	42	2240-42	Oil Drop	1	30		Packing	1	
19	2240-19	Cover	1					35		O-Ring	1	
20	2240-20	Screw	4					36		Anvil Collar	1	
21	2240-21	E-Ring	1	<b>PIN-TYPE ANVIL</b>								
23	2240-23	Rear Plate	1	43	2240PEC-43	Anvil	1					
24	2240-24	Rotor	1	44	2240PEC-44	Lock Pin	1					
26	2240-26	Cylinder	1	45	2240PEC-45	Spring	1					
				46	2240PEC-46	Pin	1					

**EAGLE GROUP**  
A Division of AIMCO

10000 SE PINE  
PORTLAND, OR 97216  
503-254-6600  
FAX 503-255-2615

When ordering spare parts, please specify tool type, part number, and description

### FOOTNOTES