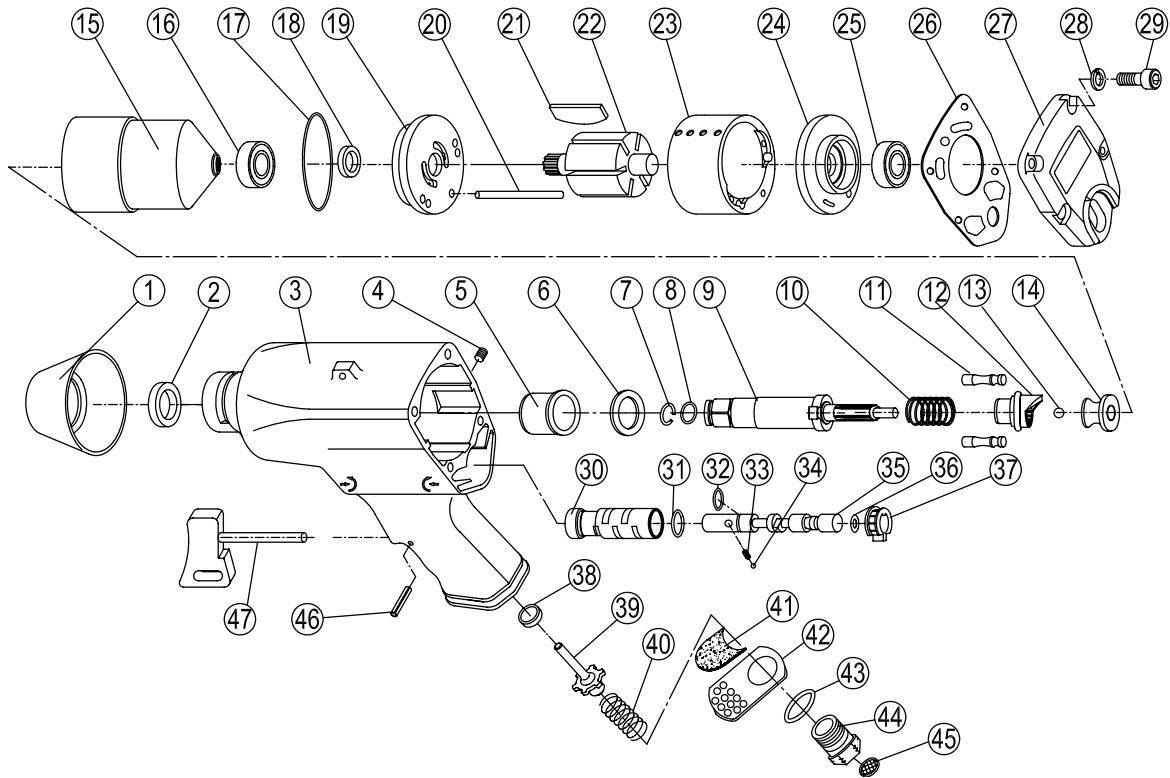


2260L PIN CLUTCH IMPACT WRENCH 1/2"

EXPLODED VIEW



PARTS LIST — FOR REFERENCE ONLY

Index Number	Part Number	Description	Qty.	Index Number	Part Number	Description	Qty.
1	2260-1	Rubber Protector Jacket	1	25	2260-25	Ball Bearing 6001	1
2	2260-2	Oil Seal Ø23.9*17*4.2	1	26	2260-26	Rear Cover Gasket	1
3	2260-3	Housing	1	27	2260-27	Rear Cover	1
4	2260-4	Set Screw PT1/16-28*6	1	28	2260-28	Spring Washer M5	4
5	2260-5	Hammer Case Bushing	1	29	2260-29	Cap Screw M5*16	4
6	2260-6	Spacer	1	30	2260-30	Regulator Valve Bushing	1
7	2260-7	Retainer Ring	1	31	2260-31	O-Ring Ø9*1.5	1
8	2260-8	O-Ring Ø7*2	1	32	2260-32	O-Ring Ø12*1.5	1
9	2260L-9	Anvil	1	33	2260-33	Spring	1
10	2260-10	Spring	1	34	2260-34	Steel Ball Ø4	1
11	2260-11	Hammer Pin	2	35	2260-35	Regulator Valve	1
12	2260-12	Cam	1	36	2260-36	O-Ring Ø8.5*3.5	1
13	2260-13	Steel Ball 5/16"	1	37	2260-37	Regulator Valve Knob	1
14	2260-14	Cam Foundation	1	38	2260-38	Valve Nut Gasket	1
15	2260-15	Hammer Frame Assembly	1	39	2260-39	Throttle Valve Assembly	1
16	2260-16	Ball Bearing 16002	1	40	2260-40	Spring	1
17	2260-17	O-Ring Ø47.5*2	1	41	2260-41	Muffler	1
18	2260-18	Oil Seal Ø25*15*4	1	42	2260-42	Exhaust Cover	1
19	2260-19	Front End Plate	1	43	2260-43	O-Ring Ø20*1.2	1
20	2260-20	Lock Pin Ø4*54.5	1	44	2260-44	Air Inlet	1
21	2260-21	Rotor Blade	6	45	2260-45	Filter Net	1
22	2260-22	Rotor	1	46	2260-46	Spring Pin Ø2*18	1
23	2260-23	Cylinder	1	47	2260-47	Trigger	1
24	2260-24	Rear End Plate	1				

FOOTNOTES

EAGLE

10000 SE Pine Street
Portland, OR 97216
503-254-6600
FAX 503-255-2615

When ordering spare parts, please specify
tool type, part number and description.

REVISED 3/08