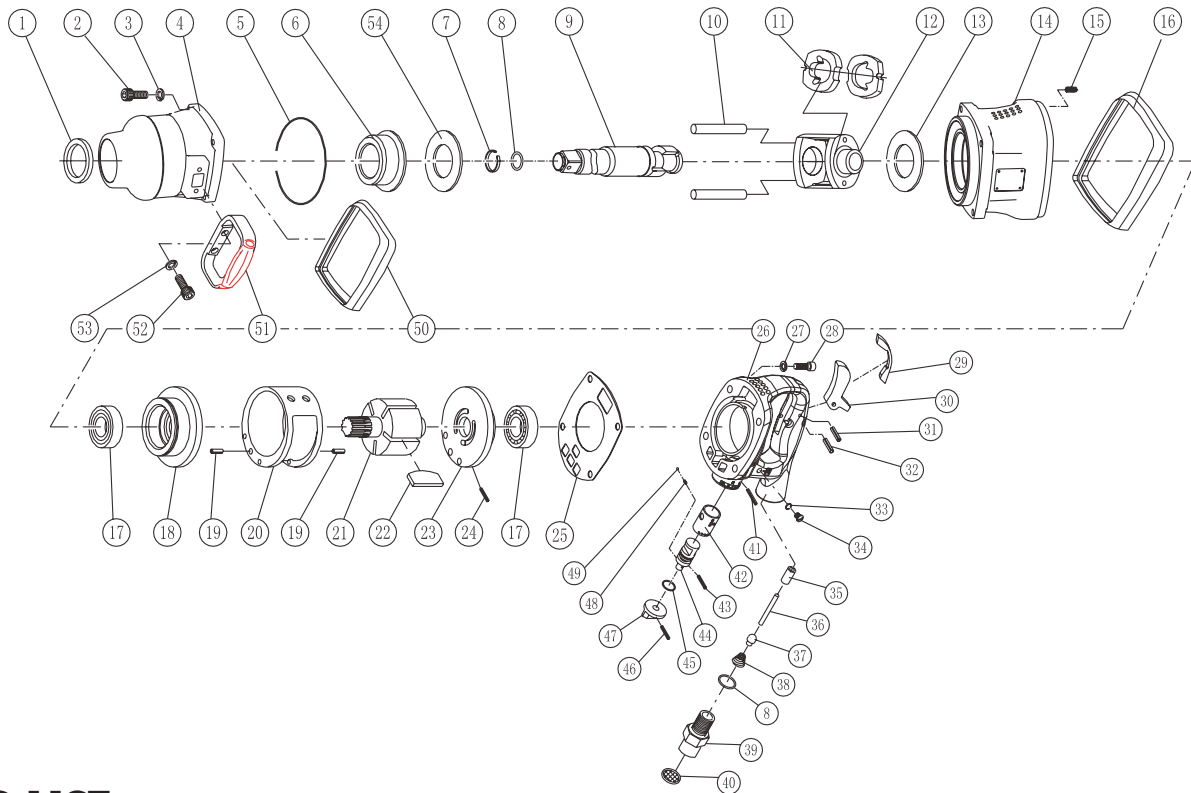


# 2450L TWIN HAMMER IMPACT WRENCH 1"

## EXPLODED VIEW



## PARTS LIST — FOR REFERENCE ONLY

Index Number	Part Number	Description	Qty.	Index Number	Part Number	Description	Qty.
1	2450-1	Oilseal 50*38*6	1	29	2450-29	Trigger Band	1
2	2450-2	Cap Screw M6*35	4	30	2450-30	Trigger	1
3	2450-3	Spring Washer M6	4	31	2450-31	Spring Pin 4*22	1
4	2450-4	Hammer Case Assembly	1	32	2450-32	Spring Pin 4*20	1
5	2450-5	O-Ring 84.5*2	1	33	2450-33	O-Ring 7*1.5	1
6	2450-6	Hammer Case Bushing	1	34	2450-34	Screw M8*8	1
7	2450-7	Retainer Ring	1	35	2450-35	Throttle Valve Bushing	1
8	2450-8	O-Ring 18*2.5	2	36	2450-36	Valve Stem	1
9	2450L-9	Anvil	1	37	2450-37	Air Closer	1
10	2450-10	Hammer Pin	2	38	2450-38	Spring	1
11	2450-11	Hammer	2	39	2450-39	Air Inlet	1
12	2450-12	Hammer Fram Assembly	1	40	2450-40	Filter Net	1
13	2450-13	Rear Washer	1	41	2450-41	Spring Pin 3*26	1
14	2450-14	Housing	1	42	2450-42	Reverse Bushing	1
15	2450-15	Screw Thread Jacket M8*2D	4	43	2450-43	Spring Pin 3*8	1
16	2450-16	End Band	1	44	2450-44	Reverse Valve	1
17	2450-17	Ball Bearing 6204	2	45	2450-45	O-Ring 15*2	1
18	2450-18	Front End Plate	1	46	2450-46	Spring Pin 3*26	1
19	2450-19	Spring Pin 4*12	2	47	2450-47	Regulator Valve Knob	1
20	2450-20	Cylinder	1	48	2450-48	Spring	1
21	2450-21	Rotor	1	49	2450-49	Steel Ball 3	1
22	2450-22	Rotor Blade	6	50	2450-50	Mid Band	1
23	2450-23	Rear End Plate	1	51	2450-51	Handle	1
24	2450-24	Spring Pin 3*8	1	52	2450-52	Cap Screw M6*16	2
25	2450-25	Handle Frame Gasket	1	53	2450-53	Spring Washer M6	2
26	2450-26	Handle Frame	1	54	2450-54	Spacer	1
27	2450-27	Cap Screw M8*25	4				
28	2450-28	Spring Washer M8	4				

### FOOTNOTES



10000 SE Pine Street  
Portland, OR 97216  
503-254-6600  
FAX 503-255-2615

When ordering spare parts, please specify  
tool type, part number and description.