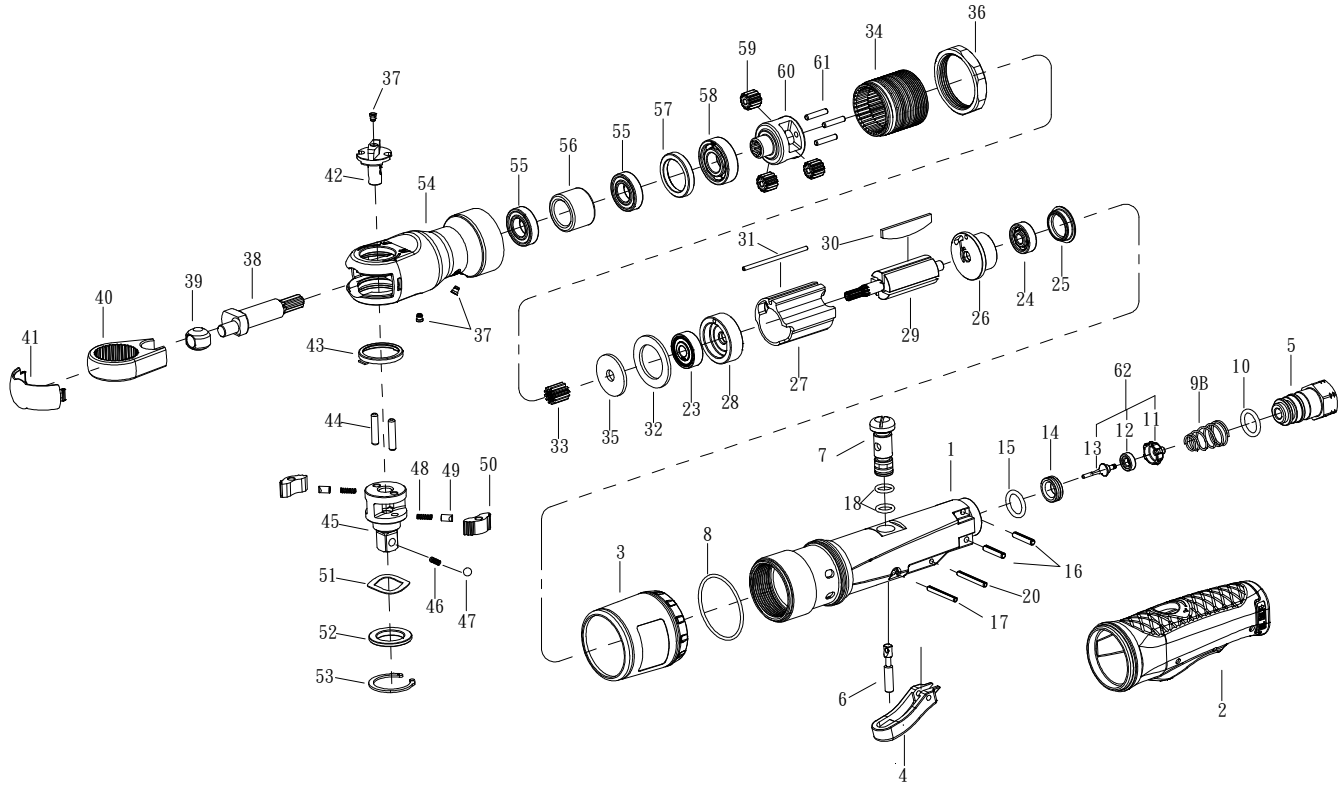


# 3220 3/8" SUPER DUTY RATCHET WRENCH

## EXPLODED VIEW



## PARTS LIST — FOR REFERENCE ONLY

Index Number	Part Number	Description	Qty	Index Number	Part Number	Description	Qty.
1	3220-1	Motor Housing	1	36	3220-36	Coupling Nut	1
2	3220-2	Rubber Grip	1	37	3220-37	Grease Fitting	3
3	3220-3	Exhaust Deflector	1	38	3220-38	Crank shaft	1
4	3220-4	Trigger	1	39	3220-39	Drive Bushing	1
5	3220-5	Air Inlet	1	40	3220-40	Ratchet Yoke	1
6	3220-6	Throttle Valve Plunger	1	41	3220-41	Ratchet Housing Cover	1
7	3220-7	Air Regulator	1	42	3220-42	Reverse Knob Assembly ( incl.37 )	1
8	3220-8	O-Ring	1	43	3220-43	Thrust Washer	1
9B	3220-9B	Spring	1	44	3220-44	Pin	2
10	3220-10	O-Ring	1	45	3220-45	Ratchet Anvil Assembly ( incl.46.47 )	1
11	3220-11	Throttle Valve	1	46	3220-46	Spring	1
12	3220-12	Throttle Valve Rubber	1	47	3220-47	Steel Ball	1
13	3220-13	Throttle Valve Pin	1	48	3220-48	Ratchet Spring	2
14	3220-14	Throttle Valve Seat	1	49	3220-49	Ratchet Lock Pin	2
15	3220-15	O-Ring	1	50	3220-50	Ratchet Pawl	2
16	3220-16	Spring Pin	2	51	3220-51	Wave Washer	1
17	3220-17	Spring Pin	1	52	3220-52	Thrust Washer	1
18	3220-18	O-Ring	2	53	3220-53	Retaining Ring	1
20	3220-20	Spring Pin	1	54	3220-54	Ratchet Housing Assembly ( incl.37 ( 2 ) )	1
23	3220-23	Ball Bearing	1	55	3220-55	Ball Bearing	2
24	3220-24	Ball Bearing	1	56	3220-56	Bushing	1
25	3220-25	End Cap	1	57	3220-57	Spacer	1
26	3220-26	Rear End Plate	1	58	3220-58	Ball Bearing	1
27	3220-27	Cylinder	1	59	3220-59	Planet Gear	3
28	3220-28	Front End Plate	1	60	3220-60	Work Spindle	1
29	3220-29	Rotor	1	61	3220-61	Pin	3
30	3220-30	Rotor Blade	4	62	3220-62	Throttle Valve Assembly ( incl.11.12.13 )	1
31	3220-31	Cylinder Dowel	1				
32	3220-32	Washer	1				
33	3220-33	Inner Gear	1				
34	3220-34	Ring Gear	1				
35	3220-35	Spacer	1				
				TK	Tune-Up Kit { 8.9B.10.15.18 ( 2 ) }		

### FOOTNOTES

- Must be Purchased in Assembly Set
- Recommended not to be purchased alone due to assembly difficulty

**1000 SE Pine Street  
Portland, OR 97216  
503-254-6600  
FAX 503-255-2615**

**When ordering spare parts, please specify tool type, part number and description.**