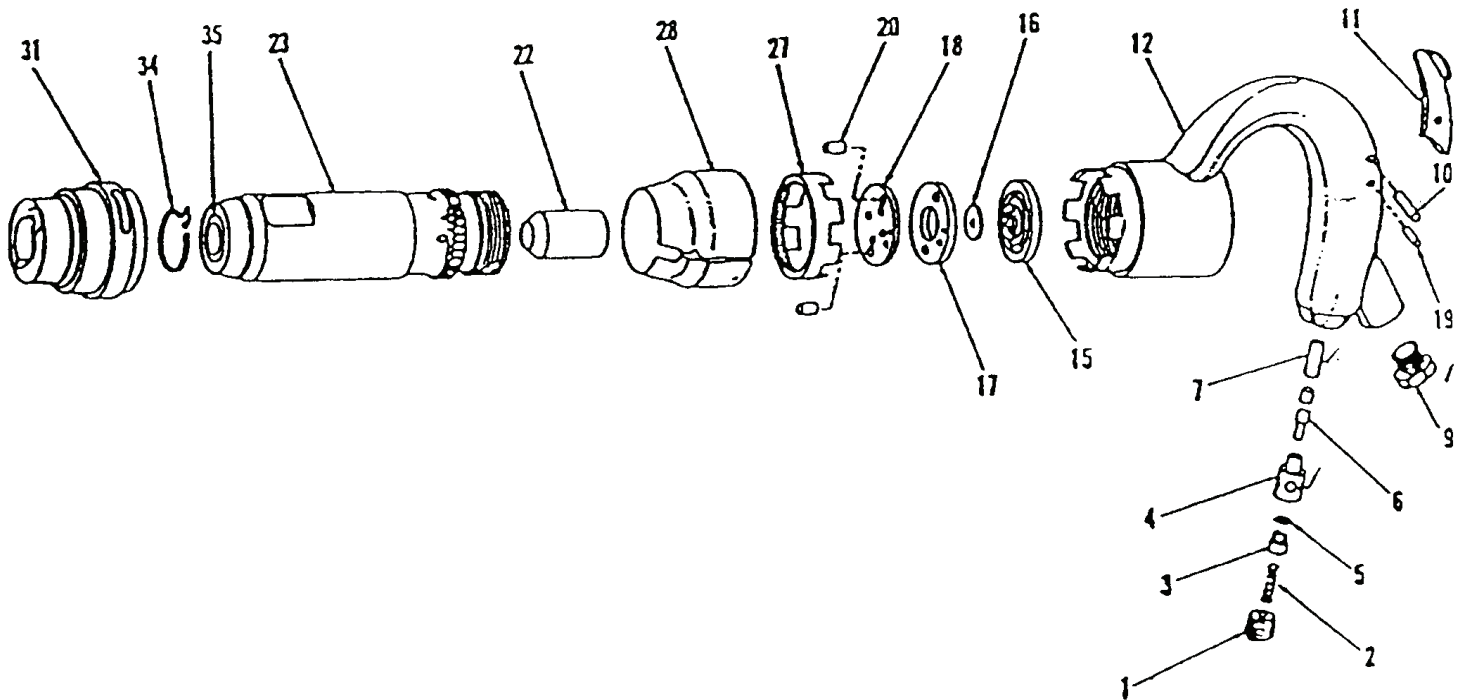


4010 3" CHIPPING HAMMER

EXPLODED VIEW



IMPORTANT

Failure to comply with the following will result in damage to the tool. On a new chipper the threads will stretch slightly. You must re-tighten a new hammer handle after 2-3 shifts of usage.

PARTS LIST – FOR REFERENCE ONLY

Index Number	Part Number	Description	Qty.	Index Number	Part Number	Description	Qty.	Index Number	Part Number	Description	Qty.
1	312-01	Throttle Plug Valve	1	12	312-12	Handle (Included No. 4, 7, 9)	1	28	312-28	Lock Shield	1
2	312-02	Throttle Spring Valve	1*	15	312-15	Upper Valve Case Lid	1	31	312-31	Retainer Sleeve	1
3	312-03	Throttle Valve	1*	16	312-16	Valve	1	34	312-34	Lock-coil Spring	1
4	312-04	Throttle Bushing Valve	1	17	312-17	Valve Case	1	35	312-35	Cylinder Bushing	1
5	312-05	O-Ring	1*	18	312-18	Lower Valve Case Lid	1	35	312-35H	Hex Bushing (Optional)	1
6	312-06	Push Pin	1*	19	312-19	Stop Pin	1	312-12A	Handle Assy. (included #1,2,3,4,5,6,7,9,10,11,12,19)		
7	312-07	Bushing Push Pin	1	20	312-20	Dowel Pin	2*				
9	312-09	Permanent Bushing	1	22	312-22-3	Piston	1				
10	312-10	Throttle Pin Lever	1	23	312-23-3	Cylinder	1				
11	312-11	Throttle Lever	1	27	312-27	Lock	1				

TECHNICAL DATA

	Max Air Pressure	Recommended Air Hose Size	BPM Free Speed	Max Air Flow CFM	Weight (lbs.)
4010	90 psi	3/8"	1,700	31	17.8

EAGLE

10000 SE Pine Street
Portland, OR 97216
503-254-6600
FAX 503-255-2615

When ordering spare parts, please specify tool type, part number and description.

FOOTNOTES

* Parts Available in Repair Kit 4010-RK*

REVISED 08/06