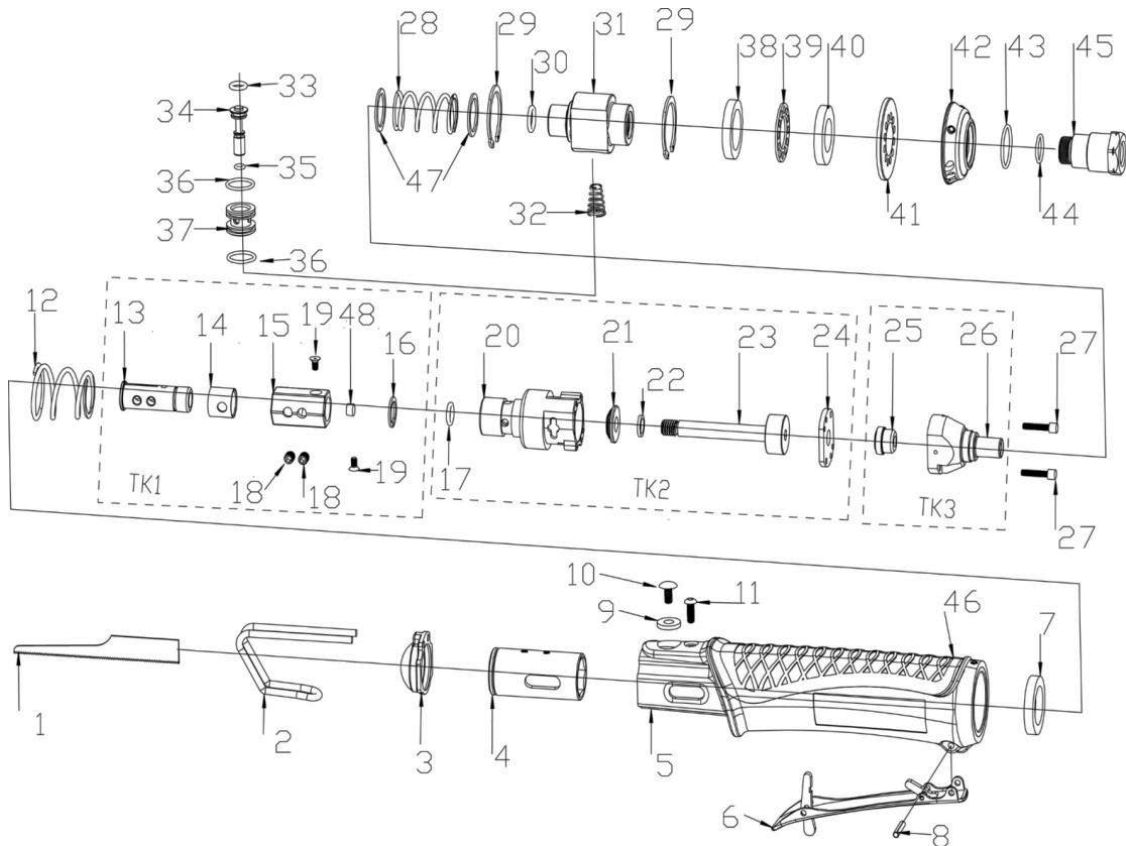


6080 SUPER DUTY VIBRATION-DAMPENED AIR BODY SAW

EXPLODED VIEW



PARTS LIST — FOR REFERENCE ONLY

Index Number	Part Number	Description	Qty.	Index Number	Part Number	Description	Qty.	Index Number	Part Number	Description	Qty.
1	6080-1	Saw Blade (32T)	1	TK2	6080-TK2	Cylinder Kit (Available as set only. Individual parts not available for purchase.)	1 set	35	6080-35	O-Ring 3 mm x 1.5 mm	1 ●
	6080-1A	Saw Blade (24T)	1	17		O-Ring 8 mm x 2 mm	1	36	6080-36	O-Ring 13 mm x 1.5 mm	2 ●
2	6080-2	Depth Regulator	1	20		Cylinder	1	37	6080-37	Intake Sleeve	1
3	6080-3	Dust-Proof	1	21		Cushion	1	38	6080-38	Muffler	1 ●
4	6080-4	Hexagon Socket	1	22		Rubber Mat	1	39	6080-39	Muffler Pad	1
5	6080-5	Housing	1	23		Piston	1	40	6080-40	Muffler	1 ●
6	6080-6	Throttle Lever	1	24		Board	1	41	6080-41	Exhaust Pad	1
7	6080-7	Oil Seal	1	TK3	6080-TK3	Rear Cylinder Kit (Available as set only. Individual parts not available for purchase.)	1 set	42	6080-42	Exhaust Hood	1
8	6080-8	Hollow Pin	1	25		Valve	1	43	6080-43	O-Ring 19 mm x 1.5 mm	1 ●
9	6080-9	Gasket	1	26		Rear Cylinder	1	44	6080-44	O-Ring 12 mm x 1.45 mm	1 ●
10	6080-10	Screw	1	27		Screw	2	45	6080-45	Air Inlet	1
11	6080-11	Screw	1	28		Spring	1	46	6080-46	Plastic Cover	1
12	6080-12	Spring	1	29		C Type Buckle	2	47	6080-47	Iron Washer	2
TK1	6080-TK1	Blade Chuck Kit (Available as set only. Individual parts not available for purchase.)	1 set	30		O-Ring 10 mm x 2 mm	1 ●	48	6080-48	Plastic Steel	1
13		Blade Chuck	1	31		Air Intake	1				
14		Casing	1	32		Spring	1				
15		Hexagon Slide	1	33		O-Ring 6 mm x 2 mm	1 ●				
16		C Type Buckle	1	34		Valve Stem	1				
18		Screw	2								
19		Screw	2								

FOOTNOTES

● = Items in 6080-TK Tune Up Kit

EAGLE GROUP
A Division of AIMCO

10000 SE PINE
PORTLAND, OR 97216
503-254-6600
FAX 503-255-2615

When ordering spare parts, please specify
tool type, part number, and description

REVISED 05/16