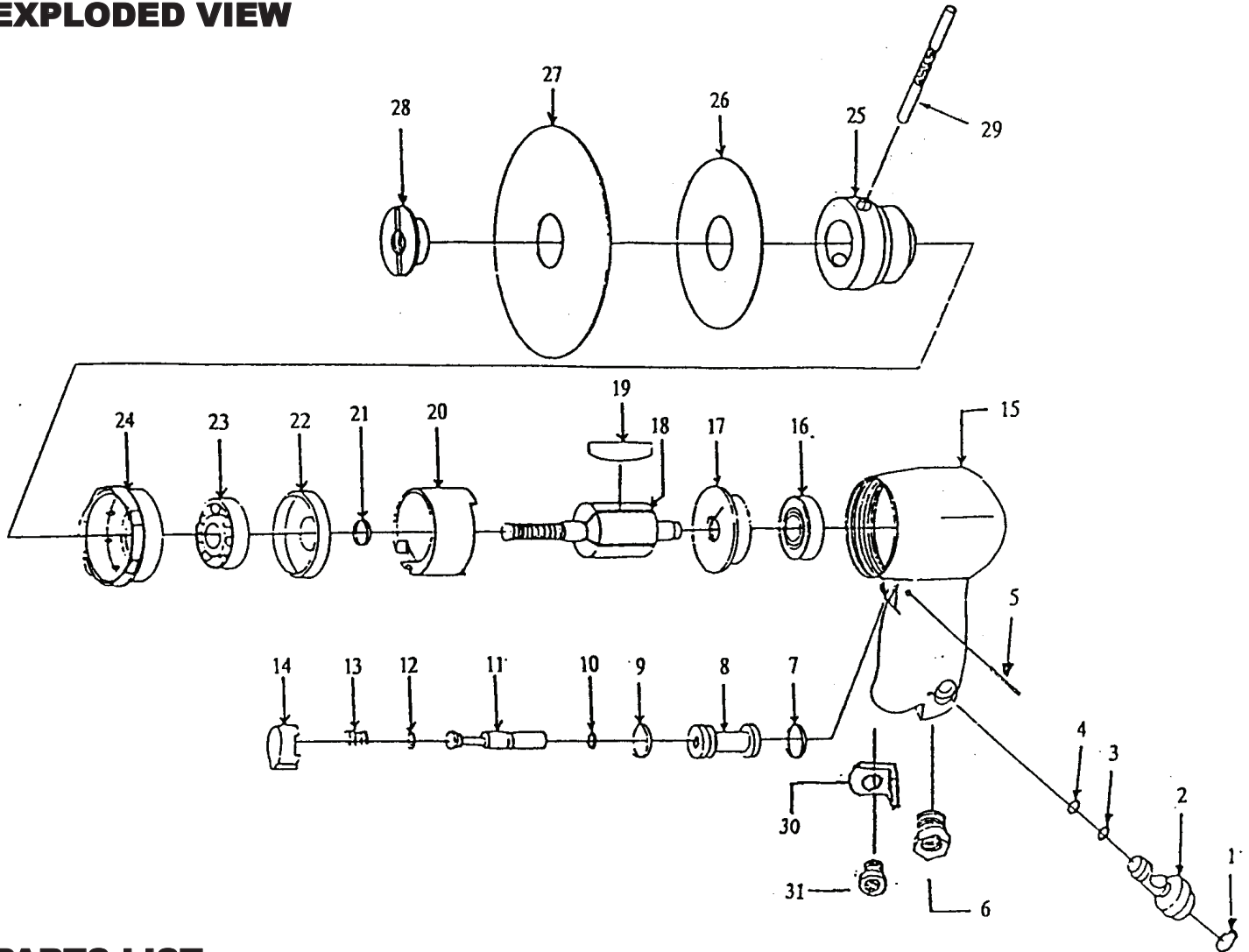


6113 HIGH SPEED SANDER

EXPLODED VIEW



PARTS LIST – FOR REFERENCE ONLY

Index Number	Part Number	Description	Qty.	Index Number	Part Number	Description	Qty.	Index Number	Part Number	Description	Qty.
1	6003A1	RING	1	12	6003A12	O-RING	1*	22	6003A22	FRONT END PLATE	1
2	6003A2	REGULATOR	1	13	6003A13	SPRING	1	23	6003A23	BALL BEARING	1
3	6003A3	O-RING	1*	14	6003A14	TRIGGER	1	24	6003A24	HOUSING LOCK RING	1
4	6003A4	O-RING	1*	15	6003A15	HOUSING	1	25	6003A25	SANDING ADAPTER	1
5	6003A5	PIN	1	16	6003A16	BALL BEARING	1	26	6003A26	BACKING 3" PLATE	1
6	6003A6	INLET BUSHING	1	17	6003A17	REAR END PLATE	1	27	6003A27	BACKING 5" PLATE	1
7	6003A7	O-RING	1*	18	6003A18	ROTOR	1	28	6003A28	ADAPTER LOCK DOWN	1
8	6003A8	VALVE BODY	1	19	6003A19	ROTOR BLADES	4*	29	6003A29	HOLDING TOOL	1
9	6003A9	O-RING	1*	20	6003A20	CYLINDER HOUSING	1	30	6003A30	BRACKET	1
10	6003A10	O-RING	1*	21	6003A21	SPACER	1	31	6003A31	MUFFLER	1
11	6003A11	VALVE STEM	1								

TECHNICAL DATA

	Max Air Pressure	Recommended Air Hose Size	RPM Free Speed	Max Air Flow CFM	Weight (lbs.)
6113 (Formerly 6003A)	90 psi	3/8"	18,000	19	2.4

FOOTNOTES

* Parts Available in Repair Kit 6003-RK*

EAGLE

10000 SE Pine Street
Portland, OR 97216
503-254-6600
FAX 503-255-2615

When ordering spare parts, please specify tool type, part number and description.

REVISED 7/06