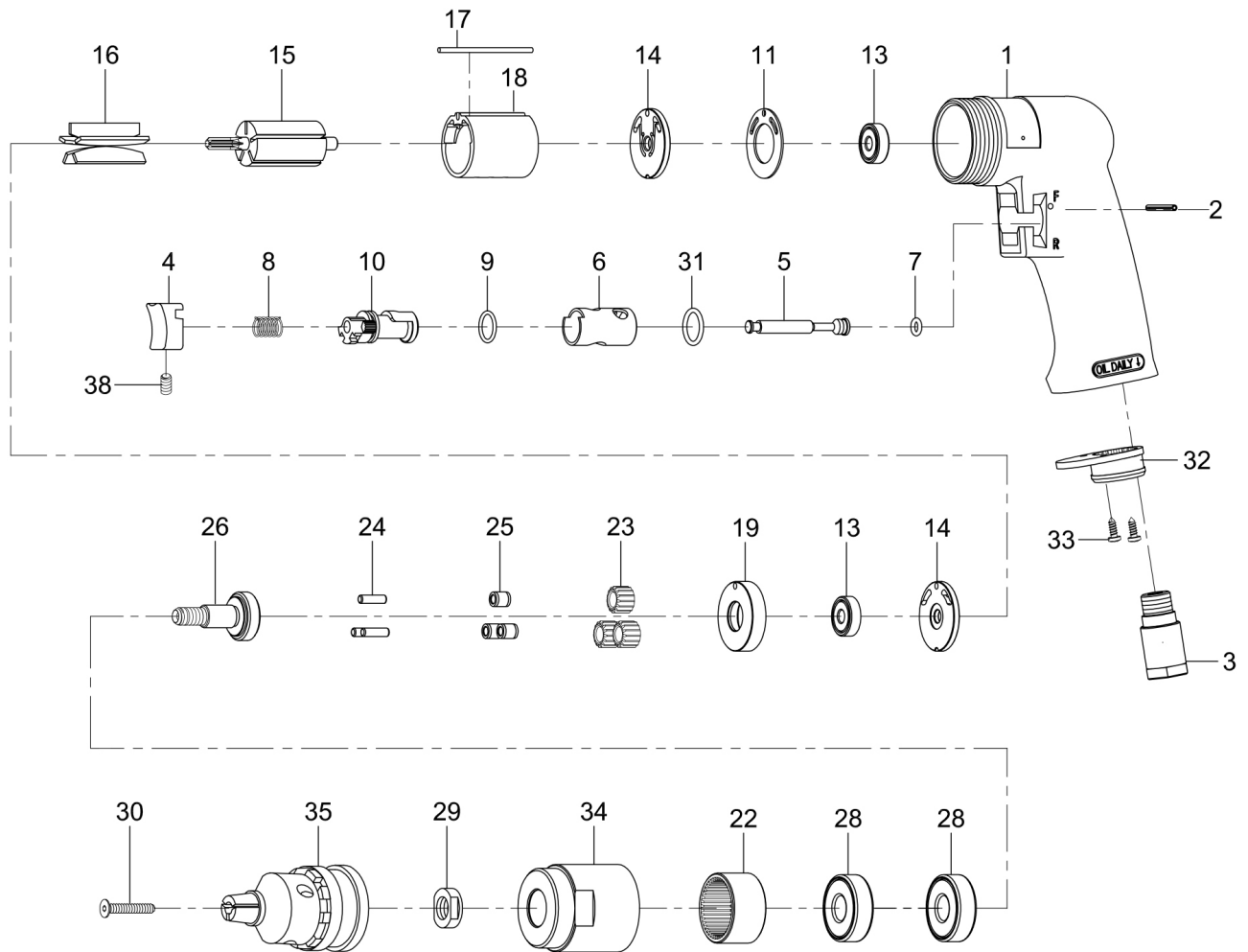


# 7102 3/8" REVERSIBLE DRILL

## EXPLODED VIEW



### PARTS LIST — FOR REFERENCE ONLY

Index Number	Part Number	Description	Qty.	Index Number	Part Number	Description	Qty.
1	SM-72501	Motor Housing	1	30	SM-72530	Chuck Screw	1
2	SM-72502	Pin	1	32	SM-72532	Exhaust Diffuser	1
3	SM-72503	Air Inlet	1	33	SM-72533	Screw	2
4	SM-72504	Trigger	1	34	SM-72534	Clamp Nut	1
5	SM-72505	Valve Stem	1	35	SM-72535	3/8" Chuck	1
6	SM-72506	Reverse Bushing	1	38	SM-72538	Set Screw	1
10	SM-72510	Reverse Lever	1		3002A-RK	Tune-Up Kit (parts available in kit only)	1
14	SM-72514	End Plate	2	7		O-Ring	1
15	SM-72515	Rotor	1	8		Valve Spring	1
17	SM-72517	Pin	1	9		O-Ring	1
18	SM-72518	Cylinder	1	11		Motor Gasket	1
19	SM-72519	Spacer	1	13		Ball Bearing 626ZZ	2
22	SM-72522	Internal Gear	1	16		Rotor Blade	5
23	SM-72523	Planet Gear	3	28		Ball Bearing 6201ZZ	2
24	SM-72524	Pin	3	31		O-Ring	1
26	SM-72526	Work Spindle	1				
29	SM-72529	Chuck Spacer	1				

### FOOTNOTES



10000 SE PINE  
PORTLAND, OR 97216  
503-254-6600  
FAX 503-255-2615

When ordering spare parts, please specify  
tool type, part number, and description