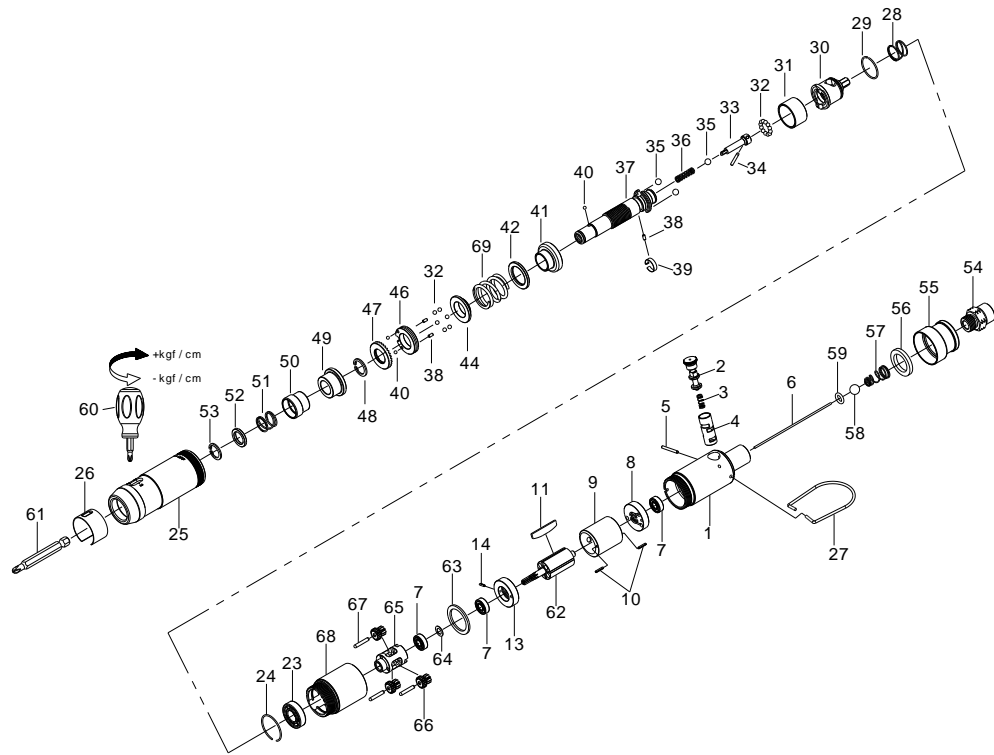


# EPTS-33017-25Q TORQUE CONTROLLED SCREWDRIVER

## EXPLODED VIEW



## PARTS LIST — FOR REFERENCE ONLY

Index Number	Part Number	Description	Qty	Index Number	Part Number	Description	Qty.
1	EPTS-33017-25Q-1	Housing Assembly ( incl. 4 )	1 ●	42	EPTS-33017-25Q-42	Washer	1
2	EPTS-33017-25Q-2	Reverse Valve	1	44	EPTS-33017-25Q-44	Spring Holder	1
3	EPTS-33017-25Q-3	Spring	1	46	EPTS-33017-25Q-46	Adjustment Nut	1
4	EPTS-33017-25Q-4	Reverse Valve Bushing	1 ▲	47	EPTS-33017-25Q-47	Adjustment Lock Ring	1
5	EPTS-33017-25Q-5	Pin	1	48	EPTS-33017-25Q-48	Retainer	1
6	EPTS-33017-25Q-6	Throttle Valve Plunger	1	49	EPTS-33017-25Q-49	Bushing	1
7	EPTS-33017-25Q-7	Bearing	2	50	EPTS-33017-25Q-50	Bit Sleeve	1
8	EPTS-33017-25Q-8	Rear End Plate	1	51	EPTS-33017-25Q-51	Spring	1
9	EPTS-33017-25Q-9	Cylinder	1	52	EPTS-33017-25Q-52	Washer	1
10	EPTS-33017-25Q-10	Pin	2	53	EPTS-33017-25Q-53	Retainer	1
11	EPTS-33017-25Q-11	Rotor Blade	4	54	EPTS-33017-25Q-54	Air Inlet	1
12	EPTS-33017-25Q-12	Rotor	1	55	EPTS-33017-25Q-55	Exhaust Deflector	1
13	EPTS-33017-25Q-13	Front End Plate	1	56	EPTS-33017-25Q-56	Muffler Element	1
14	EPTS-33017-25Q-14	Pin	1	57	EPTS-33017-25Q-57	Spring	1
23	EPTS-33017-25Q-23	Bearing	1	58	EPTS-33017-25Q-58	Steel Ball	1
24	EPTS-33017-25Q-24	Retainer	1	59	EPTS-33017-25Q-59	O-Ring	1
25	EPTS-33017-25Q-25	Hammer Case	1	60	EPTS-33017-25Q-60	Screwdriver	1
26	EPTS-33017-25Q-26	Adjustment Cover	1	61	EPTS-33017-25Q-61	Bit ( Option )	1
27	EPTS-33017-25Q-27	Hanger	1	62	EPTS-33017-25Q-62	Rotor	1
28	EPTS-33017-25Q-28	Spring	1	63	EPTS-33017-25Q-63	Washer	1
29	EPTS-33017-25Q-29	Snap Ring	1	64	EPTS-33017-25Q-64	Spacer	1
30	EPTS-33017-25Q-30	Cam Spindle	1	65	EPTS-33017-25Q-65	Spindle	1
31	EPTS-33017-25Q-31	Ball Holder	1	66	EPTS-33017-25Q-66	Planet Gear	3
32	EPTS-33017-25Q-32	Steel Ball	18	67	EPTS-33017-25Q-67	Pin	3
33	EPTS-33017-25Q-33	Driving Shaft	1	68	EPTS-33017-25Q-68	Gear Housing	1
34	EPTS-33017-25Q-34	Pin	1	69	EPTS-33017-25Q-69	Spring	1
35	EPTS-33017-25Q-35	Steel Ball	3	TK	EPTS-33017-25Q-TK	Tune-Up Kit { incl. 3.6.7 ( 2 ) .11 ( 4 ) .23.28.30.32 ( 18 ) .33.34.35 ( 3 ) .36.38 ( 3 ) .39.40 ( 3 ) .47.51.56.57.58.59.69 }	
36	EPTS-33017-25Q-36	Spring	1				
37	EPTS-33017-25Q-37	Standard Anvil	1				
38	EPTS-33017-25Q-38	Pin	3				
39	EPTS-33017-25Q-39	Band	1				
40	EPTS-33017-25Q-40	Steel Ball	3				
41	EPTS-33017-25Q-41	Cam Ring	1				

### FOOTNOTES

- Must be Purchased in Assembly Set
- ▲ Recommended not to be purchased alone due to assembly difficulty

10000 SE Pine Street  
Portland, OR 97216  
503-254-6600  
FAX 503-255-2615

When ordering spare parts, please specify  
tool type, part number and description.