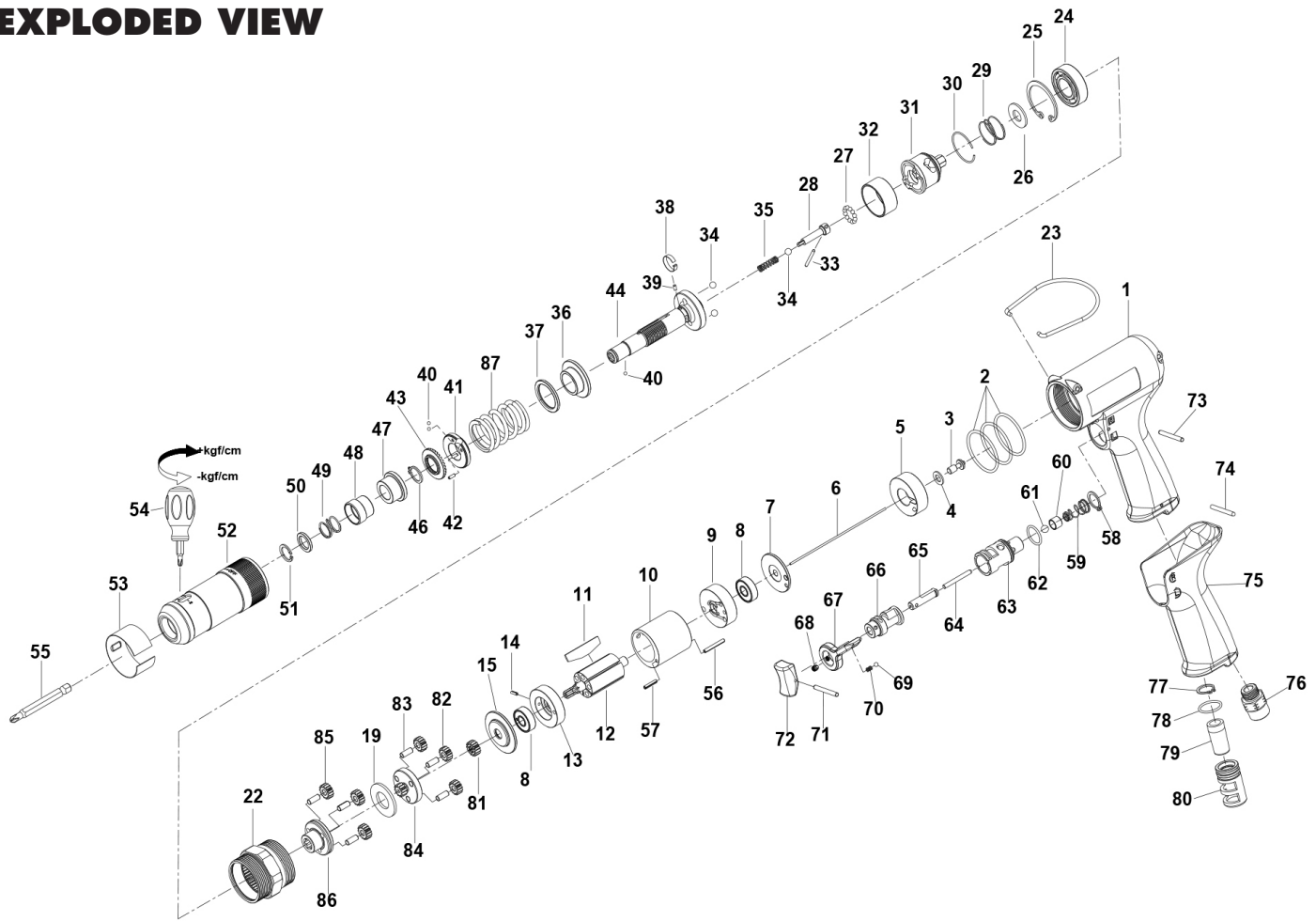


EPTS-35008P-25Q TORQUE CONTROLLED SCREWDRIVER

EXPLODED VIEW



PARTS LIST — FOR REFERENCE ONLY

Index Number	Part Number	Description	Qty.	Index Number	Part Number	Description	Qty.	Index Number	Part Number	Description	Qty.
1	EPTS-35008P-25Q-1	Housing	1	39	EPTS-35008P-25Q-39	Pin	1	75	EPTS-35008P-25Q-75	Rubber Grip	1
3	EPTS-35008P-25Q-3	Shut-off Valve	1	41	EPTS-35008P-25Q-41	Adjustment Lock Ring	1	76	EPTS-35008P-25Q-76	Air Inlet	1
4	EPTS-35008P-25Q-4	Washer	1	42	EPTS-35008P-25Q-42	Pin	1	77	EPTS-35008P-25Q-77	Retainer	1
5	EPTS-35008P-25Q-5	Handle Bushing	1	43	EPTS-35008P-25Q-43	Adjustment Nut	1	79	EPTS-35008P-25Q-79	Muffler	1
6	EPTS-35008P-25Q-6	Throttle Valve Plunger	1	44	EPTS-35008P-25Q-44	Standard Anvil	1	80	EPTS-35008P-25Q-80	Exhaust Deflector	1
7	EPTS-35008P-25Q-7	Rear Plate Space	1	46	EPTS-35008P-25Q-46	Retainer	1	81	EPTS-35008P-25Q-81	Pinion Gear	1
8	EPTS-35008P-25Q-8	Ball Bearing	2	47	EPTS-35008P-25Q-47	Bushing	1	82	EPTS-35008P-25Q-82	Planet Gear	3
9	EPTS-35008P-25Q-9	Rear End Plate	1	48	EPTS-35008P-25Q-48	Release Sleeve	1	83	EPTS-35008P-25Q-83	Pin	6
10	EPTS-35008P-25Q-10	Cylinder	1	50	EPTS-35008P-25Q-50	Washer	1	84	EPTS-35008P-25Q-84	Rear Gear Head	1
11	EPTS-35008P-25Q-11	Rotor Blade	5	51	EPTS-35008P-25Q-51	Retainer	1	85	EPTS-35008P-25Q-85	Planet Gear	3
12	EPTS-35008P-25Q-12	Rotor	1	52	EPTS-35008P-25Q-52	Clutch Housing	1	86	EPTS-35008P-25Q-86	Front Gear Head	1
13	EPTS-35008P-25Q-13	Front End Plate	1	53	EPTS-35008P-25Q-53	Rubber Ring	1				
14	EPTS-35008P-25Q-14	Spring Pin	1	54	EPTS-35008P-25Q-54	Screwdriver	1		EPTS-35008P-25Q-TK	Tune-Up Kit	1
15	EPTS-35008P-25Q-15	Washer	1	55	EPTS-35008P-25Q-55	Bit (Option)				(parts available in kit only)	
19	EPTS-35008P-25Q-19	Washer	1	56	EPTS-35008P-25Q-56	Spring Pin	1	2		O-Ring	3
22	EPTS-35008P-25Q-22	Gear Housing	1	57	EPTS-35008P-25Q-57	Spring Pin	1	27		Steel Ball	12
23	EPTS-35008P-25Q-23	Hanger	1	58	EPTS-35008P-25Q-58	Retainer	1	29		Spring	1
24	EPTS-35008P-25Q-24	Ball Bearing	1	60	EPTS-35008P-25Q-60	Throttle Valve	1	34		Steel Ball	3
25	EPTS-35008P-25Q-25	Retainer	1	63	EPTS-35008P-25Q-63	Bushing	1	35		Spring	1
26	EPTS-35008P-25Q-26	Washer	1	64	EPTS-35008P-25Q-64	Pin	1	40		Steel Ball	3
28	EPTS-35008P-25Q-28	Pilot Pin	1	65	EPTS-35008P-25Q-65	Trigger Pin	1	49		Spring	1
30	EPTS-35008P-25Q-30	Retainer	1	66	EPTS-35008P-25Q-66	Reverse Valve	1	59		Throttle Valve Spring	1
31	EPTS-35008P-25Q-31	Rear Clutch	1	67	EPTS-35008P-25Q-67	Everse Knob	1	61		Steel Ball	1
32	EPTS-35008P-25Q-32	Ball Holder	1	68	EPTS-35008P-25Q-68	Screw	1	62		O-Ring	1
33	EPTS-35008P-25Q-33	Pin	1	71	EPTS-35008P-25Q-71	Spring Pin	1	69		Steel Ball	1
36	EPTS-35008P-25Q-36	Central Clutch	1	72	EPTS-35008P-25Q-72	Trigger	1	70		Spring	1
37	EPTS-35008P-25Q-37	Washer	1	73	EPTS-35008P-25Q-73	Pin	1	78		O-Ring	1
38	EPTS-35008P-25Q-38	Band	1	74	EPTS-35008P-25Q-74	Pin	1	87		Spring	1

FOOTNOTES

EAGLE GROUP
A Division of AIMCO

10000 SE PINE
PORTLAND, OR 97216
503-254-6600
FAX 503-255-2615

When ordering spare parts, please specify tool type, part number, and description